

Appendix 10: Key Application Plans



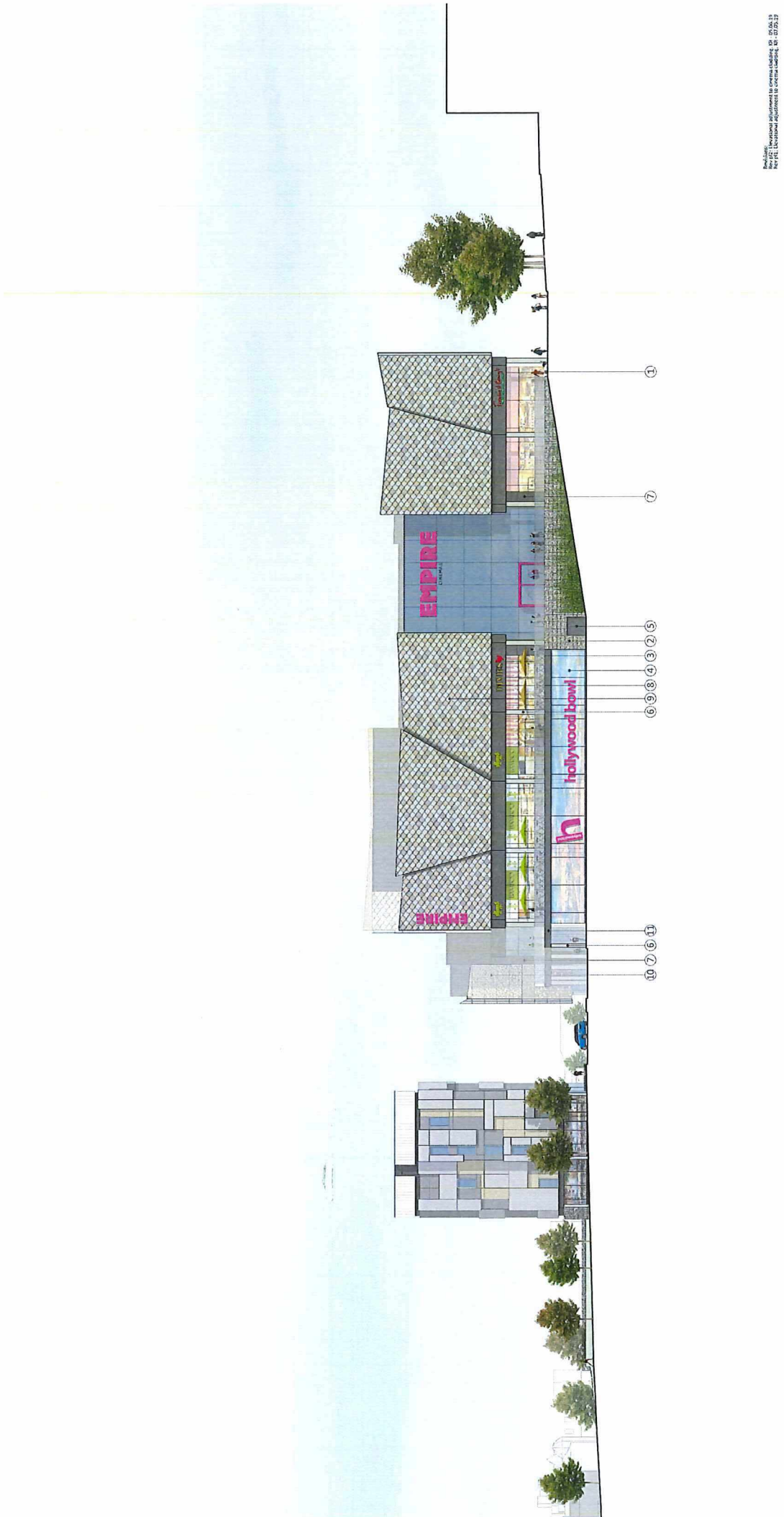
Notes:
 1. This plan is submitted for planning purposes only.
 2. The site is shown as a general guide only.
 3. All dimensions are approximate and subject to change.
 4. All dimensions are in metres unless otherwise stated.
 5. All dimensions are to the centre of the line unless otherwise stated.



Planning Issue
 CMP Architects
 Turnstone

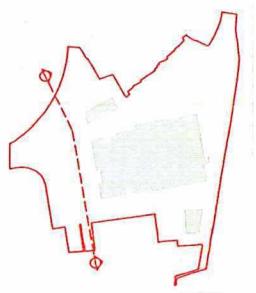
Project:
 Sewerage Development,
 Southern Cross
 The Proposed Site Plan

Drawn by: P3006/AL/11000/03
 Date: 07.12.2018
 Checked by: P3006/AL/11000/03
 Date: 07.12.2018
 Project No: P3006
 Revision: p12
 This drawing is copyright. All rights reserved. No part of this drawing may be reproduced without the prior written consent of the author.



Scale Bar - metres: 0 2.0 4.0 6.0 8.0 10.0 20.0

Drawing Status: PLANNING ISSUE
 CMP Architects
 Project: Seaway Development, Southend-on-Sea
 Title: Proposed North Elevations
 Scale: 1:250 @ A1:1400 @ A3
 Date: 07/05/2019
 Drawing No: S019 / P5020 PJZ
 This drawing is copyright. Do not reuse without written permission.
 Subject to our standard terms and conditions.



- Material Schedule**
1. Blue Engineering Brick
 2. Gabion Wall
 3. Composite Timber/Aluminium Doors
 4. SSG Glazing
 5. Composite Timber/Aluminium Doors
 6. Metal Shingle - Metallic Light Greys
 7. Metal Shingle - Metallic Light Greys
 8. Metal Cladding - Dark Grey
 9. Metal Shingle - Metallic Light Greys
 10. Metal Shingle - Metallic Light Greys
 11. Metallic Cladding Facade to Walkway - Dark Grey

Note: Landscape shown illustratively - refer to Place DP Landscape Strategy and Site Plan for design and details.



Revisions: See attached schedule to drawings. DP 05.02.23
 Rev 01: To provide adjustment to cinema and car park shading.
 Rev 02: To provide adjustment to cinema and car park shading.

Scale Bar - metres:



Drawn by: **PLANNING ISSUE**

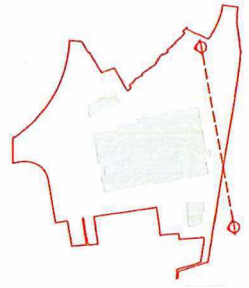
CMP Architects

TURNSTONE

Project: **Seaway Development, Southend-on-Sea**

Title: **Proposed South Elevation**

Scale: 1:1000
 Date: 07/05/2019
 Rev: 01
 Project: **plz S019/P3022**
 Subject to accurate site survey.



Material Schedule

1. Blue Engineering Brick
2. Glass
3. Glass Balustrading
4. SSG Glazing
5. Composite Timber/Aluminium Doors
6. Composite Clad Cladding
7. Metal Rainscreen Cladding - Dark Grey
8. Metal Cladding - Dark Grey
9. Metal Cladding - Light Grey
10. Perforated Metal Cladding
11. Metallic Cladding Fascia to Walkway - Dark Grey
12. Translucent Coloured Polycarbonate
13. Metal Gates

Note: Landscapes shown illustratively - refer to Place DP Landscape Strategy and Site Plan for design and details.



Notes: 1. To be used in conjunction with the following drawings: 02, 03, 04, 05, 06, 07, 08, 09, 10, 11, 12, 13, 14, 15, 16, 17, 18, 19, 20, 21, 22, 23, 24, 25, 26, 27, 28, 29, 30, 31, 32, 33, 34, 35, 36, 37, 38, 39, 40, 41, 42, 43, 44, 45, 46, 47, 48, 49, 50, 51, 52, 53, 54, 55, 56, 57, 58, 59, 60, 61, 62, 63, 64, 65, 66, 67, 68, 69, 70, 71, 72, 73, 74, 75, 76, 77, 78, 79, 80, 81, 82, 83, 84, 85, 86, 87, 88, 89, 90, 91, 92, 93, 94, 95, 96, 97, 98, 99, 100, 101, 102, 103, 104, 105, 106, 107, 108, 109, 110, 111, 112, 113, 114, 115, 116, 117, 118, 119, 120, 121, 122, 123, 124, 125, 126, 127, 128, 129, 130, 131, 132, 133, 134, 135, 136, 137, 138, 139, 140, 141, 142, 143, 144, 145, 146, 147, 148, 149, 150, 151, 152, 153, 154, 155, 156, 157, 158, 159, 160, 161, 162, 163, 164, 165, 166, 167, 168, 169, 170, 171, 172, 173, 174, 175, 176, 177, 178, 179, 180, 181, 182, 183, 184, 185, 186, 187, 188, 189, 190, 191, 192, 193, 194, 195, 196, 197, 198, 199, 200, 201, 202, 203, 204, 205, 206, 207, 208, 209, 210, 211, 212, 213, 214, 215, 216, 217, 218, 219, 220, 221, 222, 223, 224, 225, 226, 227, 228, 229, 230, 231, 232, 233, 234, 235, 236, 237, 238, 239, 240, 241, 242, 243, 244, 245, 246, 247, 248, 249, 250, 251, 252, 253, 254, 255, 256, 257, 258, 259, 260, 261, 262, 263, 264, 265, 266, 267, 268, 269, 270, 271, 272, 273, 274, 275, 276, 277, 278, 279, 280, 281, 282, 283, 284, 285, 286, 287, 288, 289, 290, 291, 292, 293, 294, 295, 296, 297, 298, 299, 300, 301, 302, 303, 304, 305, 306, 307, 308, 309, 310, 311, 312, 313, 314, 315, 316, 317, 318, 319, 320, 321, 322, 323, 324, 325, 326, 327, 328, 329, 330, 331, 332, 333, 334, 335, 336, 337, 338, 339, 340, 341, 342, 343, 344, 345, 346, 347, 348, 349, 350, 351, 352, 353, 354, 355, 356, 357, 358, 359, 360, 361, 362, 363, 364, 365, 366, 367, 368, 369, 370, 371, 372, 373, 374, 375, 376, 377, 378, 379, 380, 381, 382, 383, 384, 385, 386, 387, 388, 389, 390, 391, 392, 393, 394, 395, 396, 397, 398, 399, 400, 401, 402, 403, 404, 405, 406, 407, 408, 409, 410, 411, 412, 413, 414, 415, 416, 417, 418, 419, 420, 421, 422, 423, 424, 425, 426, 427, 428, 429, 430, 431, 432, 433, 434, 435, 436, 437, 438, 439, 440, 441, 442, 443, 444, 445, 446, 447, 448, 449, 450, 451, 452, 453, 454, 455, 456, 457, 458, 459, 460, 461, 462, 463, 464, 465, 466, 467, 468, 469, 470, 471, 472, 473, 474, 475, 476, 477, 478, 479, 480, 481, 482, 483, 484, 485, 486, 487, 488, 489, 490, 491, 492, 493, 494, 495, 496, 497, 498, 499, 500, 501, 502, 503, 504, 505, 506, 507, 508, 509, 510, 511, 512, 513, 514, 515, 516, 517, 518, 519, 520, 521, 522, 523, 524, 525, 526, 527, 528, 529, 530, 531, 532, 533, 534, 535, 536, 537, 538, 539, 540, 541, 542, 543, 544, 545, 546, 547, 548, 549, 550, 551, 552, 553, 554, 555, 556, 557, 558, 559, 560, 561, 562, 563, 564, 565, 566, 567, 568, 569, 570, 571, 572, 573, 574, 575, 576, 577, 578, 579, 580, 581, 582, 583, 584, 585, 586, 587, 588, 589, 590, 591, 592, 593, 594, 595, 596, 597, 598, 599, 600, 601, 602, 603, 604, 605, 606, 607, 608, 609, 610, 611, 612, 613, 614, 615, 616, 617, 618, 619, 620, 621, 622, 623, 624, 625, 626, 627, 628, 629, 630, 631, 632, 633, 634, 635, 636, 637, 638, 639, 640, 641, 642, 643, 644, 645, 646, 647, 648, 649, 650, 651, 652, 653, 654, 655, 656, 657, 658, 659, 660, 661, 662, 663, 664, 665, 666, 667, 668, 669, 670, 671, 672, 673, 674, 675, 676, 677, 678, 679, 680, 681, 682, 683, 684, 685, 686, 687, 688, 689, 690, 691, 692, 693, 694, 695, 696, 697, 698, 699, 700, 701, 702, 703, 704, 705, 706, 707, 708, 709, 710, 711, 712, 713, 714, 715, 716, 717, 718, 719, 720, 721, 722, 723, 724, 725, 726, 727, 728, 729, 730, 731, 732, 733, 734, 735, 736, 737, 738, 739, 740, 741, 742, 743, 744, 745, 746, 747, 748, 749, 750, 751, 752, 753, 754, 755, 756, 757, 758, 759, 760, 761, 762, 763, 764, 765, 766, 767, 768, 769, 770, 771, 772, 773, 774, 775, 776, 777, 778, 779, 780, 781, 782, 783, 784, 785, 786, 787, 788, 789, 790, 791, 792, 793, 794, 795, 796, 797, 798, 799, 800, 801, 802, 803, 804, 805, 806, 807, 808, 809, 810, 811, 812, 813, 814, 815, 816, 817, 818, 819, 820, 821, 822, 823, 824, 825, 826, 827, 828, 829, 830, 831, 832, 833, 834, 835, 836, 837, 838, 839, 840, 841, 842, 843, 844, 845, 846, 847, 848, 849, 850, 851, 852, 853, 854, 855, 856, 857, 858, 859, 860, 861, 862, 863, 864, 865, 866, 867, 868, 869, 870, 871, 872, 873, 874, 875, 876, 877, 878, 879, 880, 881, 882, 883, 884, 885, 886, 887, 888, 889, 890, 891, 892, 893, 894, 895, 896, 897, 898, 899, 900, 901, 902, 903, 904, 905, 906, 907, 908, 909, 910, 911, 912, 913, 914, 915, 916, 917, 918, 919, 920, 921, 922, 923, 924, 925, 926, 927, 928, 929, 930, 931, 932, 933, 934, 935, 936, 937, 938, 939, 940, 941, 942, 943, 944, 945, 946, 947, 948, 949, 950, 951, 952, 953, 954, 955, 956, 957, 958, 959, 960, 961, 962, 963, 964, 965, 966, 967, 968, 969, 970, 971, 972, 973, 974, 975, 976, 977, 978, 979, 980, 981, 982, 983, 984, 985, 986, 987, 988, 989, 990, 991, 992, 993, 994, 995, 996, 997, 998, 999, 1000.

Scale Bar - metres:
0 2.0 4.0 6.0 8.0 10.0 20.0

Drawing Status:
PLANNING ISSUE

CMP Architects

TURNSTONE

Project:
Seaway Development,
Southend-on-Sea

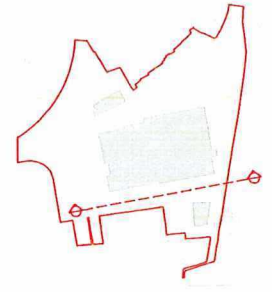
Title:
Proposed West Elevations

Drawn By:
1.10009A1/1400@A3

Checked By:
piz

Date:
07/05/2019

Project No:
S019/P3023



- Material Schedule
1. Blue Engineering Brick
 2. Gabion Wall
 3. Glass Balustrading
 4. SGG Glazing/Timber/Aluminium Doors
 5. Grey Metal Clad Columns
 6. Grey Metal Clad Columns
 7. Metal Rainscreen Cladding - Dark Grey
 8. Metal Rainscreen Cladding - Metallic Light Greys
 9. Perforated Metal Cladding
 10. Perforated Metal Cladding

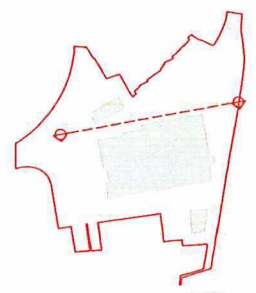
Note: Landscape shown illustratively - refer to Place DP Landscape Strategy and Site Plan for design and details.



Notes:
 1. All elevations are to be shown in accordance with the relevant standards.
 2. All elevations are to be shown in accordance with the relevant standards.
 3. All elevations are to be shown in accordance with the relevant standards.



Drawing Name: PLANNING ISSUE
 Client: CMP Architects
 Project: Sotway Development, Southend-on-Sea
 Title: Proposed East Elevation
 Date: 12/08/2019
 Drawn By: K. [Name]
 Checked By: [Name]
 Project No: S019/P3021
 Revision: p12



- Material Schedule**
1. Blue Engineering Brick
 2. Glass Balustrading
 3. Composite Timber/Aluminium Doors
 4. SSG Glazing
 5. Metal Cladding - Dark Grey
 6. Metal Cladding - Dark Grey
 7. Metal Cladding - Dark Grey
 8. Metal Cladding - Dark Grey
 9. Metal Cladding - Dark Grey
 10. Perforated Metal Cladding
 11. Metallic Cladding Fascia to Walkway - Dark Grey
 12. Translucent Coloured Polycarbonate

Note: Landscape shown illustratively - refer to Place DP Landscape Strategy and Site Plan for design and details.



Legend

- D2 Use
- A3 / A5 Use in the alternative
- A3 / A5 / D2 Use in the alternative
- Service & Circulation
- Multi-Storey Car Park
- Staff Core
- Hotel
- Plant
- Multi-Screen Cinema
- Public Toilets

Reference:
 Rev 2/21 Proposed site plan submitted on 17.04.2019.
 Rev 1/20 Proposed site plan submitted on 17.04.2019.
 Approved for multi-storey car park management on 18.07.2019

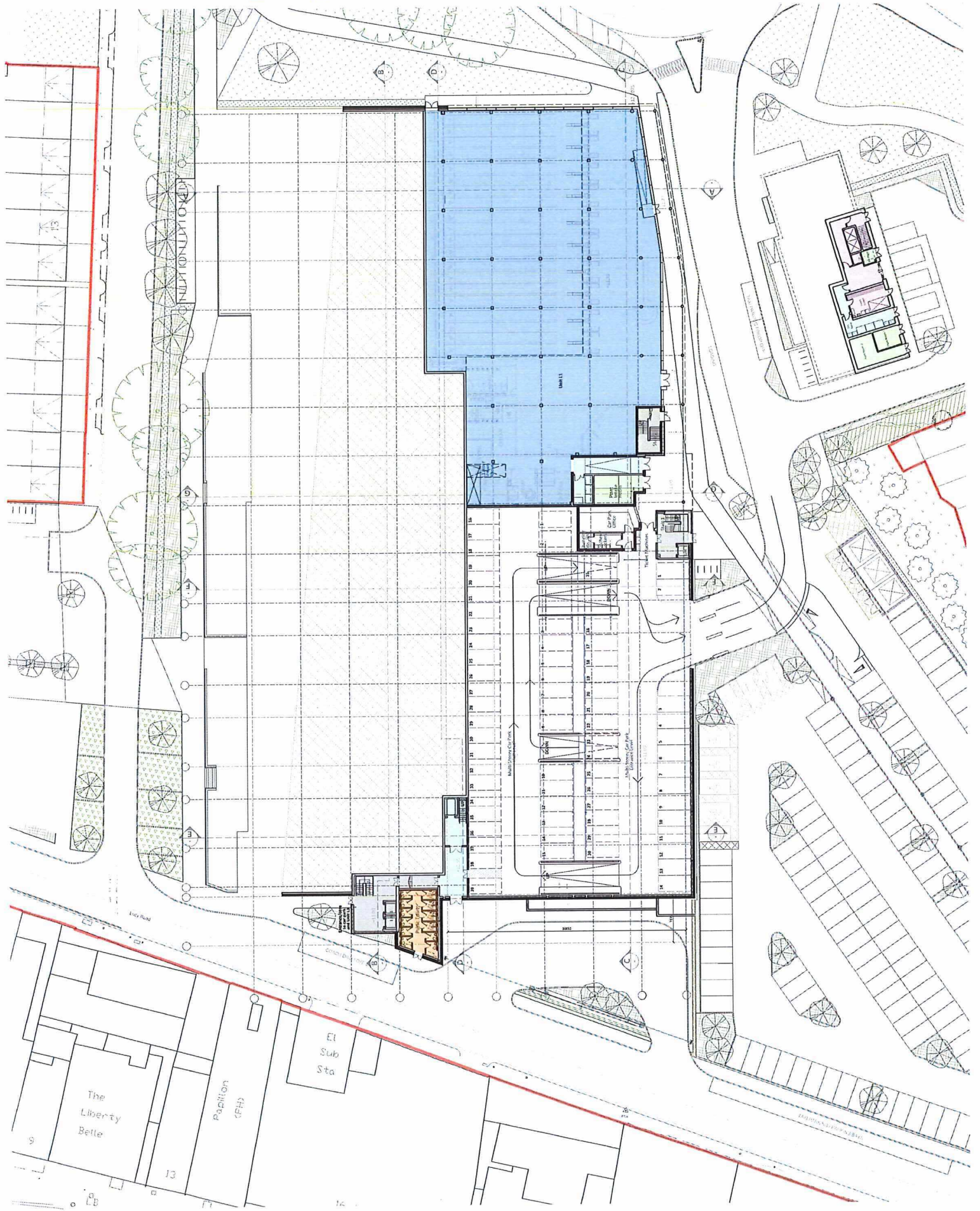


Drawing Status:
PLANNING ISSUE
 CMP Architects

TURNSTONE
 Project:
 Swayway Development,
 Southfields on-360

Title:
 Proposed Lower Ground Level Plan

Rev No: 07.12.18
 Rev Desc: Revision
 Rev Date: 07.12.18
 Rev By: piz
 This drawing is copyright. Do not reuse from drawing.
 Subject to contract and applicable law.





Legend

- D2 Use
- A3 / A5 Use in the alternative
- A3 / A5 / D2 Use in the alternative
- Service & Circulation
- Multi-Storey Car Park
- Stair Core
- Hotel
- Plant
- Multi-Screen Cinema
- Public Foyers

Reference:
 Part A12 Proposed Incorporation of Part 2A of the Planning (Listed Buildings and Buildings) Regulations 2017, Part 2A of the Planning (Listed Buildings and Buildings) Regulations 2017, Part 2A of the Planning (Listed Buildings and Buildings) Regulations 2017.



Drawn by:
PLANNING ISSUE

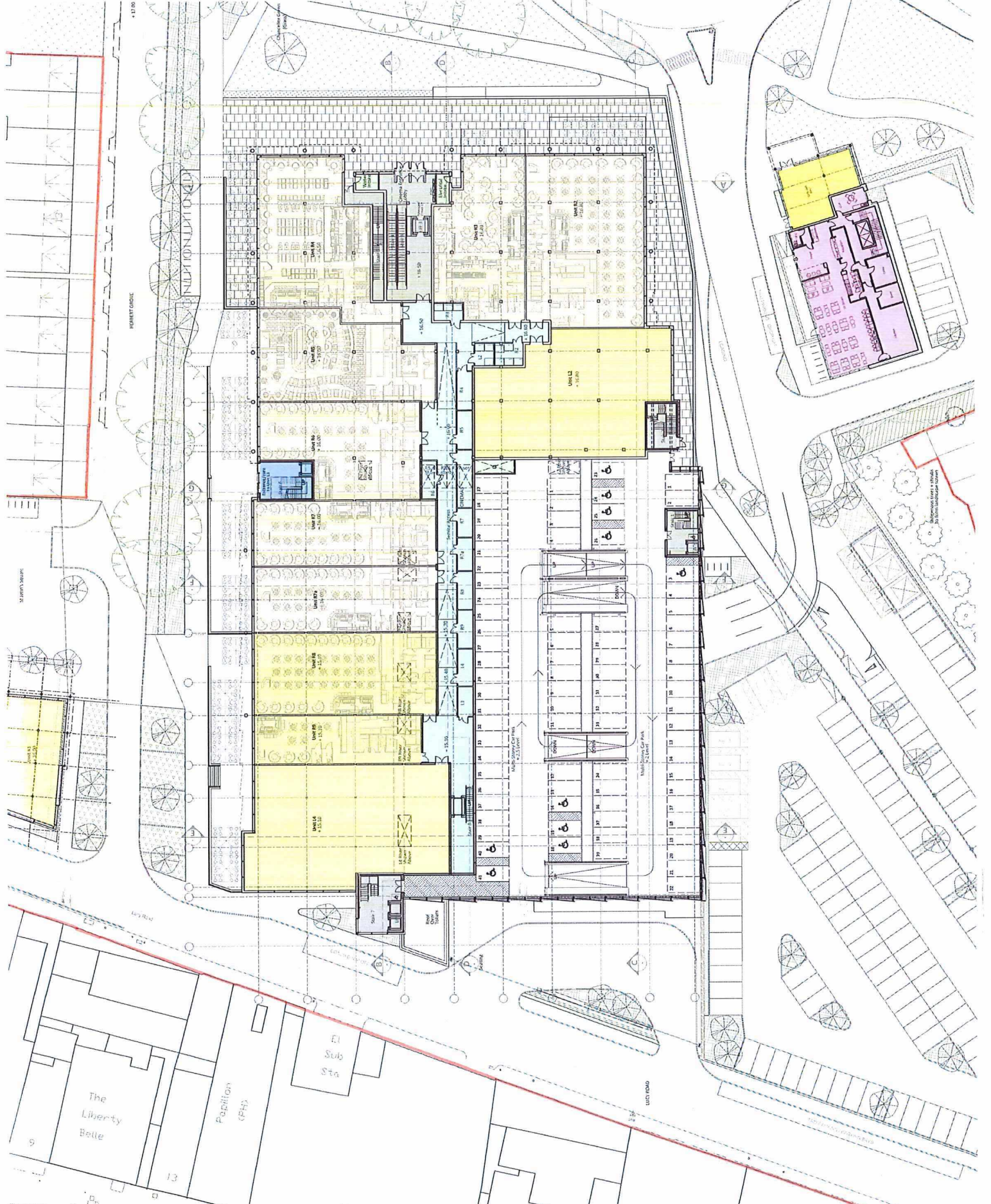
CMP Architects
 Architects

TURNSTONE

Project:
 Scowrey Development,
 Salford, M6 6PU

Title:
 Proposed Ground Level Plan

Drawn by:
 JCS/PA/17/500/0A3
 Date:
 07/12/2018
 Checked by:
 PIZ
 Project No:
 S019 / P5008
 This drawing is copyright. Do not scale from drawing.
 Subject to standard conditions of sale.





Legend

- D2 Use
- A3 / A5 Use in the alternative
- A3 / A5 / D2 Use in the alternative
- Service & Circulation
- Multi-Storey Car Park
- Stair Core
- Hotel
- Plant
- Multi-Screen Cinema
- Public Toilets

Approved: [Signature]
 Approved: [Signature]
 Approved: [Signature]
 Approved: [Signature]
 Approved: [Signature]



Drawing Status:
PLANNING ISSUE

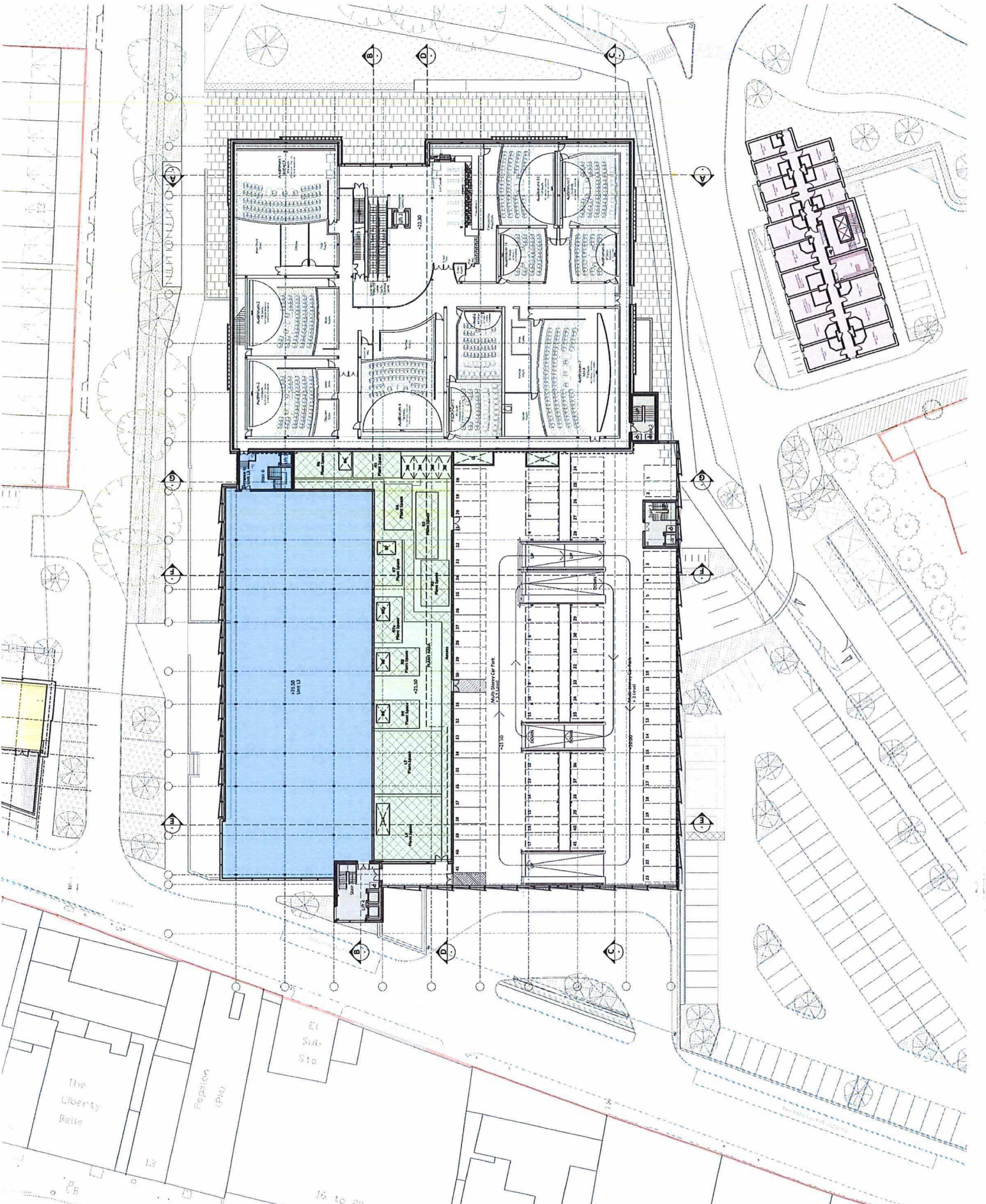
CMP Architects

TURNSTONE

Project:
 Stationery Development,
 Stationery Park

Type:
 Proposed Cinema Level Plan

Client:
 12350@A1/JL500@A3
 Date:
 07.12.2018
 Drawing No:
S019 / P3009
 Revision:
 pl2
 This drawing is copyright. Do not reuse from drawing.
 Project: Stationery Park



The Liberty Belle
 13
 16 to 20

Stationery Park

Stationery Park

Stationery Park

Stationery Park

Stationery Park

Stationery Park

Stationery Park

Stationery Park

Stationery Park

Stationery Park

Stationery Park

Stationery Park

Stationery Park

Stationery Park

Stationery Park

Stationery Park

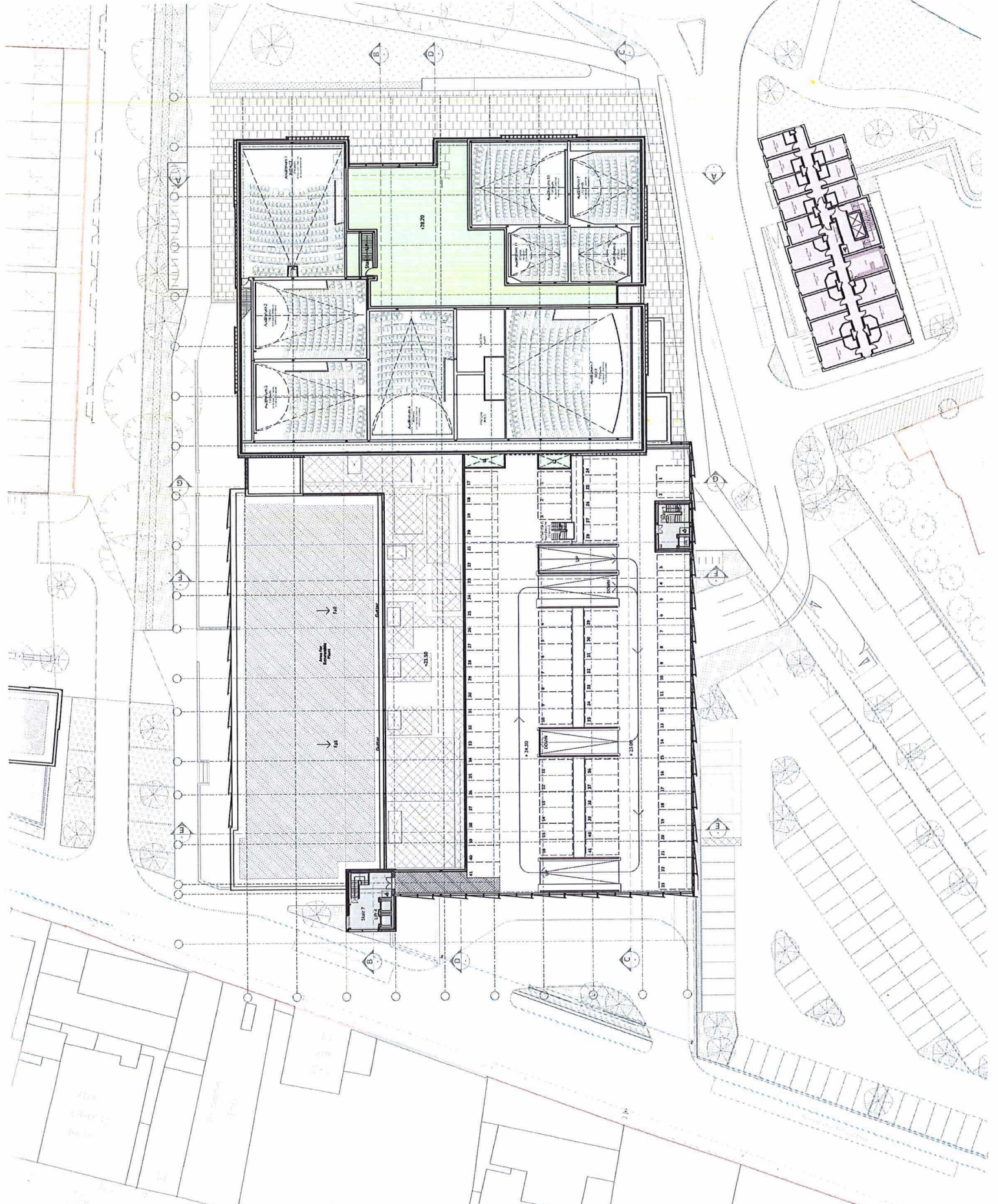
Stationery Park

Stationery Park



Legend

- D1 Use
- A3 / A5 Use in the alternative
- A3 / A5 / D2 Use in the alternative
- Service & Circulation
- Multi-Storey Car Park
- Stair Core
- Hotel
- Plant
- Multi-Screen Cinema
- Public Toilets



Revision:
Rev 01: Approved for planning application on 14.09.15.
Rev 02: Approved for planning application on 14.09.15.
Rev 03: Approved for planning application on 14.09.15.
Rev 04: Approved for planning application on 14.09.15.



Drawn:
Checked:
Project:
Client:
Date:

PLANNING ISSUE
CMP
architects

TURNSTONE

Project:
Sawney Development,
Sudcliffe-on-Sea

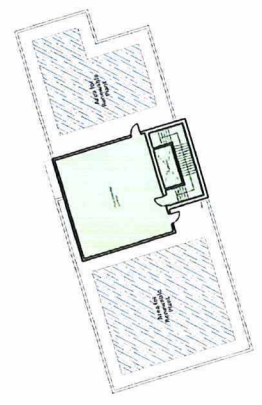
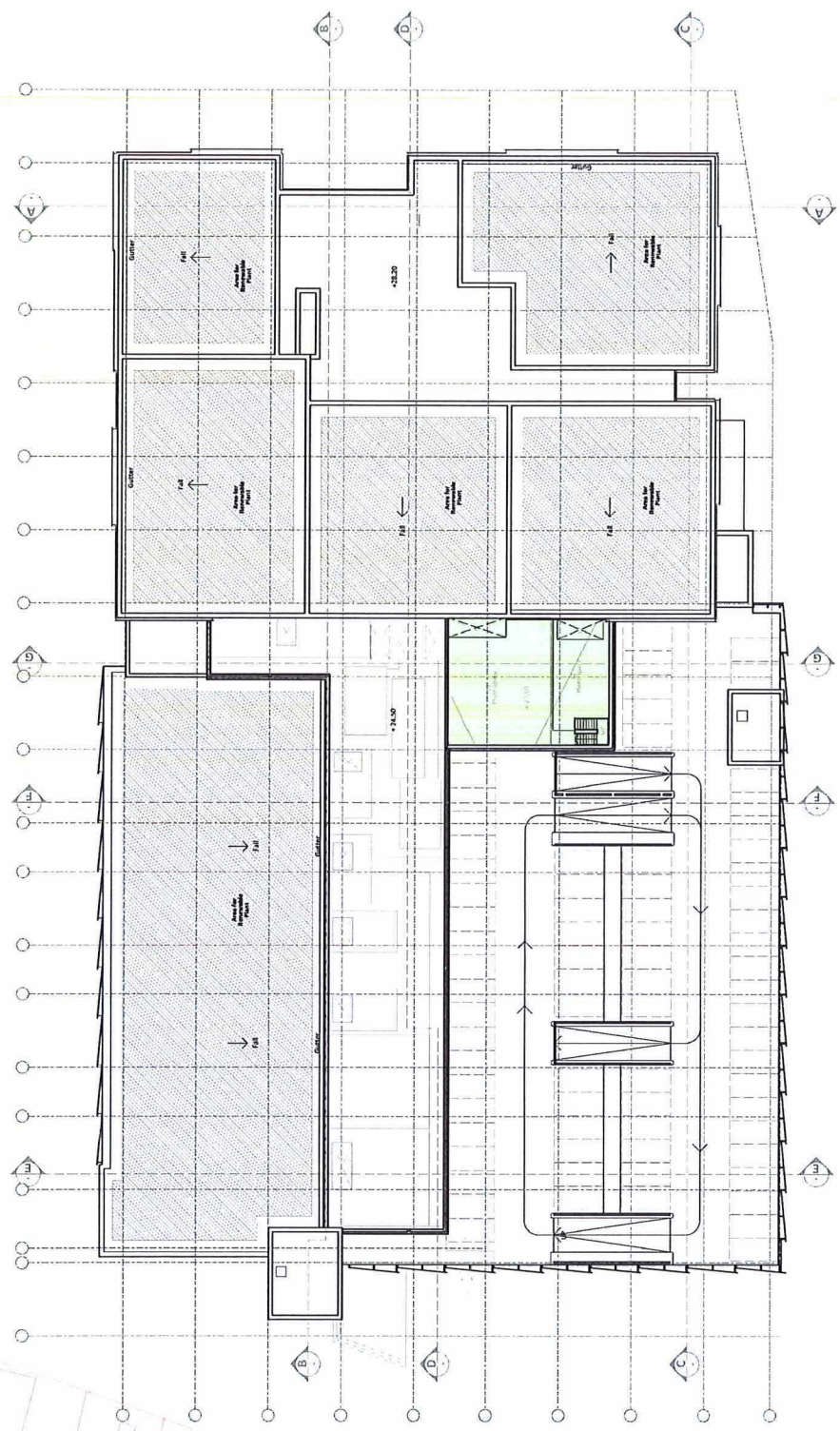
The Proposed Auditorium Level Plan

Scale: 1:500 @ A1 / 1:500 @ A3
Drawn: [Name]
Checked: [Name]
Project: S019 / P3010
Date: 07.11.2015
This drawing is a copyright. Do not use from drawing.
Subject to standard conditions of sale.



Legend

- DZ Use
- A3 / AS Use in the alternative
- A3 / AS / DS Use in the alternative
- Service & Circulation
- Multi-Storey Car Park
- Stair Core
- Hotel
- Plant
- Multi-Screen Cinema
- Public Toilets



Prepared by: [Name]
Checked by: [Name]
Date: 07.12.2018



PLANNING ISSUE

CMP
Architects

TURNSTONE

Project:
Sewerage Development,
Sudbury-CP-304

Title:
Proposed Roof Level Plan

Drawn by: [Name]
Checked by: [Name]
Date: 07.12.2018
Project: [Name]
Drawing No: **S019 / P3011**
This drawing is copyright. Do not reuse from drawing.
Subject to standard conditions of sale.

**Multi-Storey Car Park:
394 spaces (incl 20 disabled >5%)**



Reference: Approved to small format car park arrangement. Ref: 23/07/19



Drawn at Scale:
PLANNING ISSUE

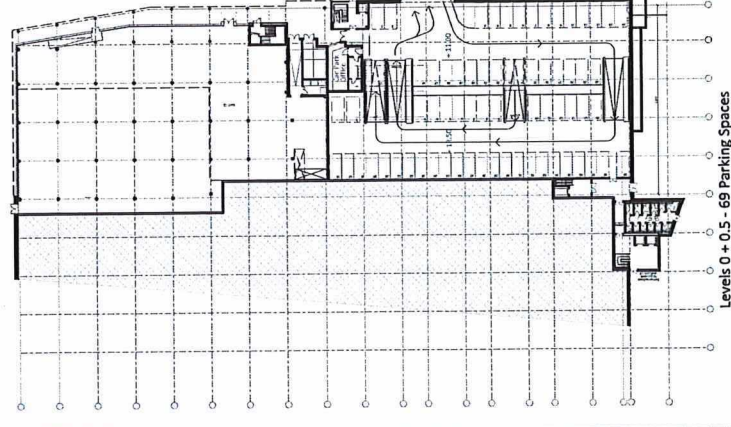
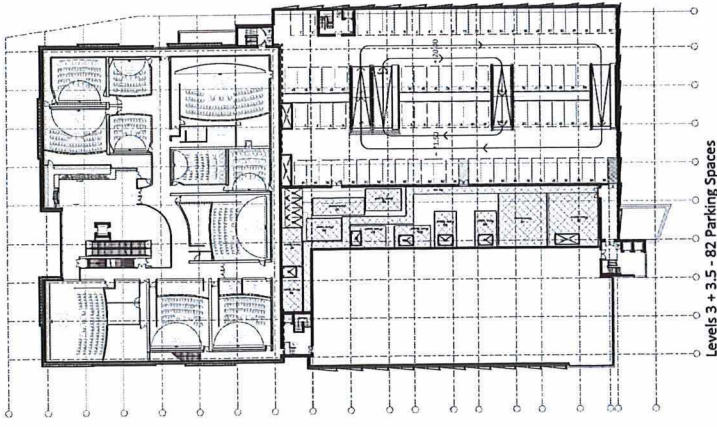
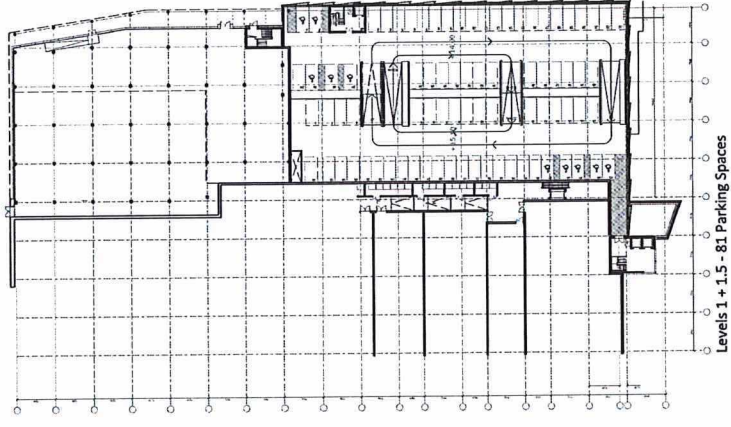
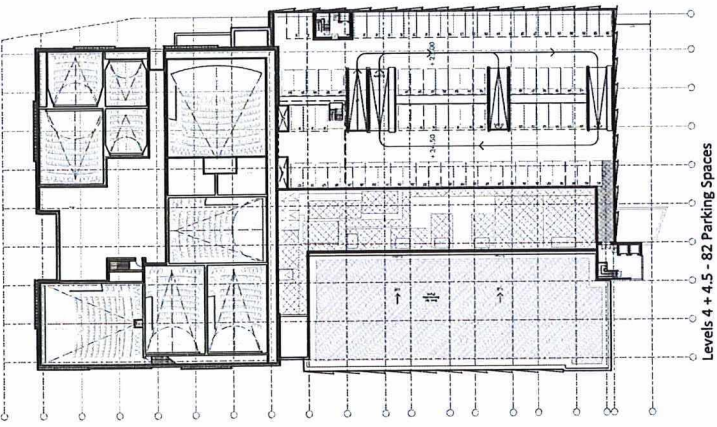
CMP Architects

TURNSTONE

Project:
Sewerway Development,
Southend-on-Sea

Title:
Proposed Car Park Plans

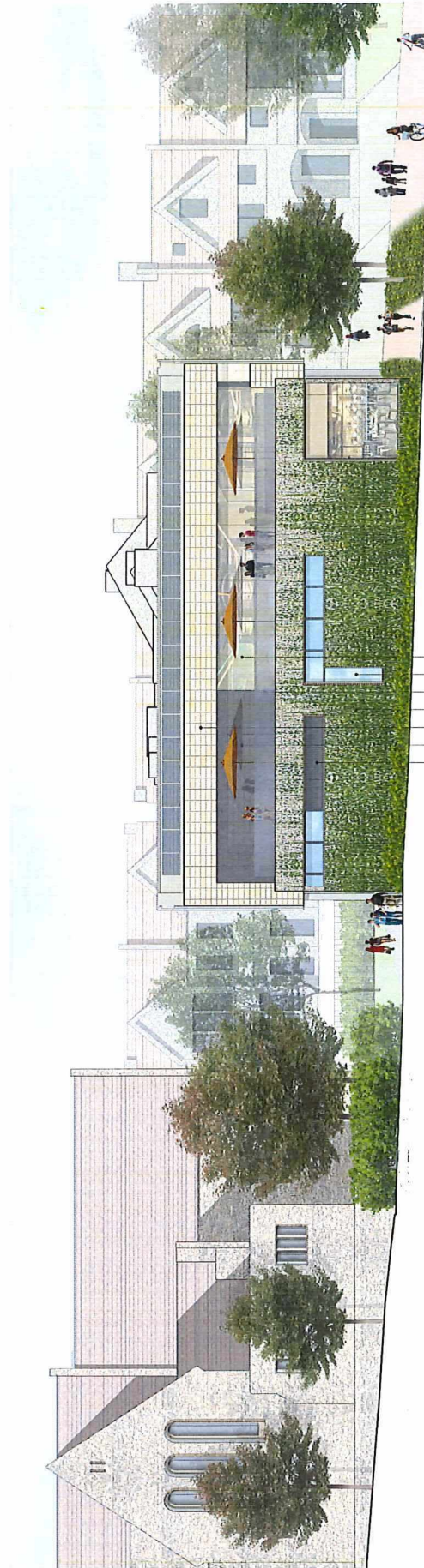
Scale: 1:1000
Date: 07.11.2018
Drawing No: **S019/P3012**
Revision: **pl1**
This drawing is copyright. Do not take from drawing.
Subject to standard car park layout.



Levels 2 + 2.5 - 80 Parking Spaces

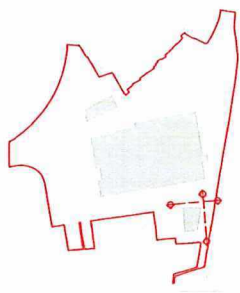


Proposed East Elevation



Proposed South Elevation

- Material Schedule**
1. Blue Engineering Brick
 2. Gibson's Wall
 3. Glass Wall Cladding
 4. SSS Glazing
 5. Composite Timber/Aluminium Doors
 6. Composite Timber/Aluminium Windows
 7. Grey Metal Clad Columns
 8. Terracotta/Clay-Derived Tiles
 9. Metal Finishing panels
 10. Metal Louvre panels

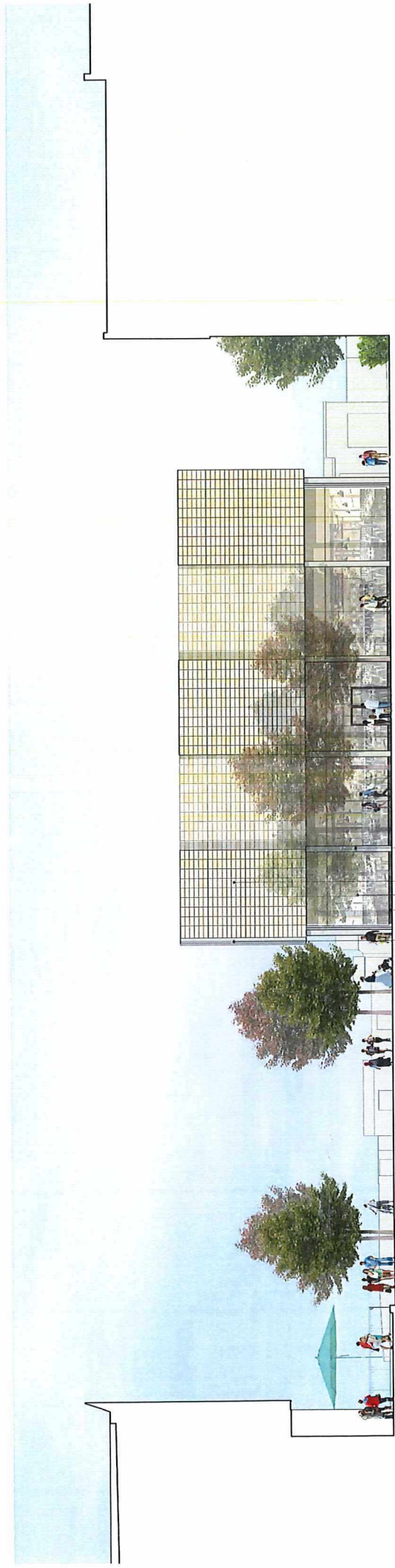


REVISIONS:
 Revision 1: Updated to reflect the South and East Elevations. 08.10.2018
 Revision 2: Updated to reflect the South and East Elevations. 08.10.2018
 Revision 3: Updated to reflect the South and East Elevations. 08.10.2018
 Revision 4: Updated to reflect the South and East Elevations. 08.10.2018
 Revision 5: Updated to reflect the South and East Elevations. 08.10.2018
 Revision 6: Updated to reflect the South and East Elevations. 08.10.2018
 Revision 7: Updated to reflect the South and East Elevations. 08.10.2018
 Revision 8: Updated to reflect the South and East Elevations. 08.10.2018
 Revision 9: Updated to reflect the South and East Elevations. 08.10.2018
 Revision 10: Updated to reflect the South and East Elevations. 08.10.2018

Scale Bar - metres:
 0 1.0 2.0 3.0 4.0 5.0 10.0

Drawing Project:
PLANNING ISSUE
CMP Architects
 Client:
TURNSTONE
 Project:
 Seaway Development,
 Southend-on-Sea
 Title:
 Proposed East & South Elevations
 Date:
 07.12.2018
 Drawn:
 S019/P3027
 Checked:
 pl5
 This drawing is copyright CMP Architects. Do not reuse from drawing.
 Prepared for client and planning authority.

Note: Landscape shown illustratively - refer to Place DP Landscape Strategy and Site Plan for design and details.

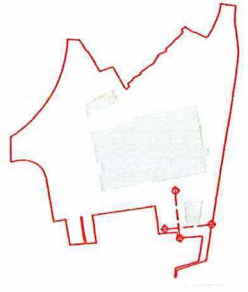


Proposed North Elevation



Proposed West Elevation

- Material Schedule
1. Blue Engineering Brick
 2. Glass Balustrading
 3. SSG Glazing
 4. Composite Timber/Aluminum Doors
 5. Grey Metal Clad Columns
 6. Terracotta/Clay-Derived Tiles
 7. Metal Finishing



Scale Bar - meters:
 0 1.0 2.0 3.0 4.0 5.0 10.0

Drawing Status:
PLANNING ISSUE

CMP Architects

TURNSTONE

Project:
 Seaway Development,
 Southfield-on-Six

Title:
 P15
 Proposed North & West Elevations

Drawn by:
 J1100@A17-200@A3

Checked by:
 J1100@A17-200@A3

Date:
 07.12.2018

Revision:
S019/P3026 p15

This drawing is copyright CMP Architects. All other content from drawing is copyright its respective owner.

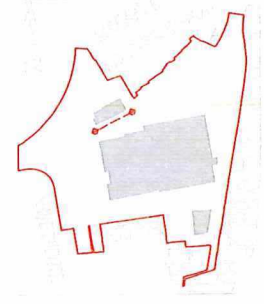
Note: Landscape shown illustratively - refer to Place DP Landscape Strategy and Site Plan for design and details.



West Elevation (Front Elevation)

- Material Schedule
1. Blue Engineering Brick
 2. Gabion Wall
 3. Glass Balustrading
 4. Composite Timber/Aluminium Doors
 5. Composite Timber/Aluminium Windows
 6. Grey Metal Clad Columns
 7. Grey Metal Clad Columns - Dark Grey
 8. Metal Cladding - Grey
 9. Metal Cladding - Grey
 10. Translucent Coloured Polycarbonate
 11. Grey Metal Cycle Shelter

Note: Landscapes shown illustratively - refer to Place DP Landscape Strategy and Site Plan for design and details.



Notes:
 All drawings are for information only and are not intended to be used for construction.
 The drawings are the property of CMP Architects and shall remain their property.
 No part of these drawings may be reproduced without the written consent of CMP Architects.
 Drawn by: [Name]
 Checked by: [Name]
 Date: 23.05.2019



Drawing Issue:
 PLANNING ISSUE

CMP Architects

TURNSTONE

Project:
 Seaway Development,
 Southampton City

Title:
 Hotel - Proposed West Elevation

Drawn by: [Name]
 Checked by: [Name]
 Date: 23.05.2019
 Scale: 1:1000
 Project No: S019/P3034
 Revision: p13
 This drawing is copyright. Do not reuse from drawing.
 Project No: S019/P3034



North Elevation

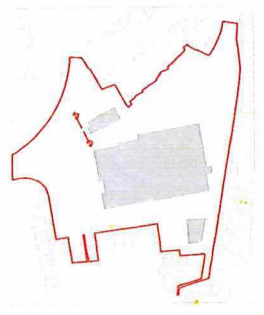
- Material Schedule**
1. Blue Engineering Brick
 2. Blue Engineering Brick
 3. Glass Balustrading
 4. SGG Glazing
 5. Composite Timber/Aluminium Doors
 6. Composite Timber/Aluminium Windows
 7. Grey/Metal Clad Columns
 8. Metal Rainscreen Cladding - Dark Grey
 9. Translucent Coloured Polycarbonate
 10. Translucent Coloured Polycarbonate

Note: Landscape shown illustratively - refer to Place DP Landscape Strategy and Site Plan for design and details.

Notes:
 1. Additional planning added to the entrance. A1, 21, 26, 27, 29, 30, 31, 32, 33, 34, 35, 36, 37, 38, 39, 40, 41, 42, 43, 44, 45, 46, 47, 48, 49, 50, 51, 52, 53, 54, 55, 56, 57, 58, 59, 60, 61, 62, 63, 64, 65, 66, 67, 68, 69, 70, 71, 72, 73, 74, 75, 76, 77, 78, 79, 80, 81, 82, 83, 84, 85, 86, 87, 88, 89, 90, 91, 92, 93, 94, 95, 96, 97, 98, 99, 100, 101, 102, 103, 104, 105, 106, 107, 108, 109, 110, 111, 112, 113, 114, 115, 116, 117, 118, 119, 120, 121, 122, 123, 124, 125, 126, 127, 128, 129, 130, 131, 132, 133, 134, 135, 136, 137, 138, 139, 140, 141, 142, 143, 144, 145, 146, 147, 148, 149, 150, 151, 152, 153, 154, 155, 156, 157, 158, 159, 160, 161, 162, 163, 164, 165, 166, 167, 168, 169, 170, 171, 172, 173, 174, 175, 176, 177, 178, 179, 180, 181, 182, 183, 184, 185, 186, 187, 188, 189, 190, 191, 192, 193, 194, 195, 196, 197, 198, 199, 200, 201, 202, 203, 204, 205, 206, 207, 208, 209, 210, 211, 212, 213, 214, 215, 216, 217, 218, 219, 220, 221, 222, 223, 224, 225, 226, 227, 228, 229, 230, 231, 232, 233, 234, 235, 236, 237, 238, 239, 240, 241, 242, 243, 244, 245, 246, 247, 248, 249, 250, 251, 252, 253, 254, 255, 256, 257, 258, 259, 260, 261, 262, 263, 264, 265, 266, 267, 268, 269, 270, 271, 272, 273, 274, 275, 276, 277, 278, 279, 280, 281, 282, 283, 284, 285, 286, 287, 288, 289, 290, 291, 292, 293, 294, 295, 296, 297, 298, 299, 300, 301, 302, 303, 304, 305, 306, 307, 308, 309, 310, 311, 312, 313, 314, 315, 316, 317, 318, 319, 320, 321, 322, 323, 324, 325, 326, 327, 328, 329, 330, 331, 332, 333, 334, 335, 336, 337, 338, 339, 340, 341, 342, 343, 344, 345, 346, 347, 348, 349, 350, 351, 352, 353, 354, 355, 356, 357, 358, 359, 360, 361, 362, 363, 364, 365, 366, 367, 368, 369, 370, 371, 372, 373, 374, 375, 376, 377, 378, 379, 380, 381, 382, 383, 384, 385, 386, 387, 388, 389, 390, 391, 392, 393, 394, 395, 396, 397, 398, 399, 400, 401, 402, 403, 404, 405, 406, 407, 408, 409, 410, 411, 412, 413, 414, 415, 416, 417, 418, 419, 420, 421, 422, 423, 424, 425, 426, 427, 428, 429, 430, 431, 432, 433, 434, 435, 436, 437, 438, 439, 440, 441, 442, 443, 444, 445, 446, 447, 448, 449, 450, 451, 452, 453, 454, 455, 456, 457, 458, 459, 460, 461, 462, 463, 464, 465, 466, 467, 468, 469, 470, 471, 472, 473, 474, 475, 476, 477, 478, 479, 480, 481, 482, 483, 484, 485, 486, 487, 488, 489, 490, 491, 492, 493, 494, 495, 496, 497, 498, 499, 500, 501, 502, 503, 504, 505, 506, 507, 508, 509, 510, 511, 512, 513, 514, 515, 516, 517, 518, 519, 520, 521, 522, 523, 524, 525, 526, 527, 528, 529, 530, 531, 532, 533, 534, 535, 536, 537, 538, 539, 540, 541, 542, 543, 544, 545, 546, 547, 548, 549, 550, 551, 552, 553, 554, 555, 556, 557, 558, 559, 560, 561, 562, 563, 564, 565, 566, 567, 568, 569, 570, 571, 572, 573, 574, 575, 576, 577, 578, 579, 580, 581, 582, 583, 584, 585, 586, 587, 588, 589, 590, 591, 592, 593, 594, 595, 596, 597, 598, 599, 600, 601, 602, 603, 604, 605, 606, 607, 608, 609, 610, 611, 612, 613, 614, 615, 616, 617, 618, 619, 620, 621, 622, 623, 624, 625, 626, 627, 628, 629, 630, 631, 632, 633, 634, 635, 636, 637, 638, 639, 640, 641, 642, 643, 644, 645, 646, 647, 648, 649, 650, 651, 652, 653, 654, 655, 656, 657, 658, 659, 660, 661, 662, 663, 664, 665, 666, 667, 668, 669, 670, 671, 672, 673, 674, 675, 676, 677, 678, 679, 680, 681, 682, 683, 684, 685, 686, 687, 688, 689, 690, 691, 692, 693, 694, 695, 696, 697, 698, 699, 700, 701, 702, 703, 704, 705, 706, 707, 708, 709, 710, 711, 712, 713, 714, 715, 716, 717, 718, 719, 720, 721, 722, 723, 724, 725, 726, 727, 728, 729, 730, 731, 732, 733, 734, 735, 736, 737, 738, 739, 740, 741, 742, 743, 744, 745, 746, 747, 748, 749, 750, 751, 752, 753, 754, 755, 756, 757, 758, 759, 760, 761, 762, 763, 764, 765, 766, 767, 768, 769, 770, 771, 772, 773, 774, 775, 776, 777, 778, 779, 780, 781, 782, 783, 784, 785, 786, 787, 788, 789, 790, 791, 792, 793, 794, 795, 796, 797, 798, 799, 800, 801, 802, 803, 804, 805, 806, 807, 808, 809, 810, 811, 812, 813, 814, 815, 816, 817, 818, 819, 820, 821, 822, 823, 824, 825, 826, 827, 828, 829, 830, 831, 832, 833, 834, 835, 836, 837, 838, 839, 840, 841, 842, 843, 844, 845, 846, 847, 848, 849, 850, 851, 852, 853, 854, 855, 856, 857, 858, 859, 860, 861, 862, 863, 864, 865, 866, 867, 868, 869, 870, 871, 872, 873, 874, 875, 876, 877, 878, 879, 880, 881, 882, 883, 884, 885, 886, 887, 888, 889, 890, 891, 892, 893, 894, 895, 896, 897, 898, 899, 900, 901, 902, 903, 904, 905, 906, 907, 908, 909, 910, 911, 912, 913, 914, 915, 916, 917, 918, 919, 920, 921, 922, 923, 924, 925, 926, 927, 928, 929, 930, 931, 932, 933, 934, 935, 936, 937, 938, 939, 940, 941, 942, 943, 944, 945, 946, 947, 948, 949, 950, 951, 952, 953, 954, 955, 956, 957, 958, 959, 960, 961, 962, 963, 964, 965, 966, 967, 968, 969, 970, 971, 972, 973, 974, 975, 976, 977, 978, 979, 980, 981, 982, 983, 984, 985, 986, 987, 988, 989, 990, 991, 992, 993, 994, 995, 996, 997, 998, 999, 1000.



Drawn by: **TURNSTONE**
 Project: **Seaway Development, Salford/Port-Salis**
 Title: **Hotel - Proposer North Elevation**
 Scale: **A1/1:2000/3**
 Date: **07/12/2018**
 Project: **S019/P3031**
 File Name: **pl2**
 This drawing is copyright. Do not scale from drawing. Subject to accurate site survey.

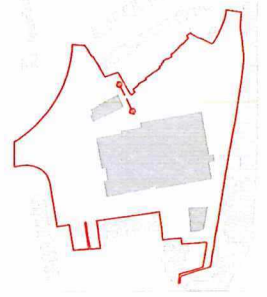




South Elevation

- Material Schedule**
1. Blue Engineering Brick
 2. Glass Balustrading
 3. Glass Balustrading
 4. SSG Glazing
 5. Composite Timber/Aluminium Doors
 6. Composite Timber/Aluminium Windows
 7. Grey Metal Clad Columns
 8. Metal Rainscreen Cladding - Dark Grey
 9. Translucent Coloured Polycarbonate
 10. Translucent Coloured Polycarbonate
 11. Grey Metal Cycle Shelter

Note: Landscape shown illustratively - refer to Place DP Landscape Strategy and Site Plan for design and details.



Rev A21: Final workshop adopted the elevation. Additional details to inform cladding panels. Ref: 21/07/2019

Scale Bar - metres: 0 4.0 8.0

Drawing Stage:
PLANNING ISSUE

CMP Architects
 Client

TURNSTONE
 Project
 Seaway Development,
 Southend-on-Sea

Title: Hotel - Proposed South Elevation

Drawn By: T.J.P.
 Date: 07.11.2018

Drawn As: T.J.P.
 Revision: **plz**
S019/P3033
 This document is copyright. Do not make items from it.
 Subject to standard disclaimer.

